

La sécurité de vos installations pour une protection absolue
The security of your installation in absolute protection



Soupapes ISO 4126

Safety Valves according to ISO 4126

Sicherheitsventil nach ISO 4126

Soupapes API 520-526

Safety Valves according to API 520/526

Sicherheitsventil nach API 520-526

Systemes de prise d'échantillon

Sampling Systems

Probeentnahmessysteme



Soupapes ISO 4126

Safety valves according to ISO 4126

Sicherheitsventil nach ISO 4126

+ PRODUITS

- Soupape pression - Pression/dépression - Casse vide
- DN 8 à DN 150
- - 0.8 bar à 300 bar
- Raccordements : Brides intégrales et tournantes, fileté, clamp, SMS ...
- Matériaux : Bronze, Fonte GS, Acier, Inox, Alloy.
- Conforme DESP 97/23 CE + ATEX 94/9

+ PRODUCTS

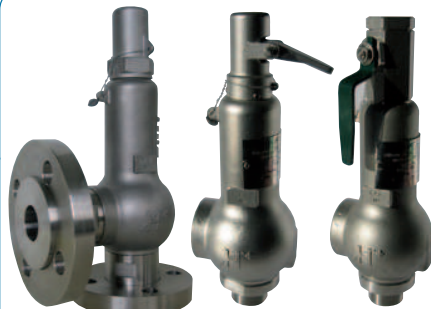
- Pressure - Pressure/Vacuum - Vacuum Safety Valves
- ND 8 to ND 150
- - 0.8 bar to 300 bar
- Connexion : flanges and loosed flanges, screwed, clamp, SMS...
- Materials : Bronze, Cast Iron, Stainless Steel, Carbon Steel, Alloy.
- According PED 93/23 EC + ATEX 94/9

+ PRODUKT

- Überdruckventil - Über- und Unterdruckventil - Unterdruckventil
- DN 8 to DN 150
- - 0.8 bar to 300 bar
- Verbindung : flansche, gewinde, clamp, SMS...
- Materialien : Guss, Sphäroguss, Stahl, Edelstahl, Alloy.
- Nach PED 97/23 EC + ATEX 94/9



INDUSTRIE - CHIMIE - PHARMACIE / INDUSTRY - CHEMICAL - PHARMACEUTICAL / INDUSTRIE - CHEMIE - PHARMAZIE



ISO 4126



Type 100/200



MATERIAL	ND	PN	SET PRESSURE	CLASS	SET PRESSURE
CAST IRON	ND20 to ND80	PN16	0,25 to 16 bar		
	ND100	PN16	0,25 to 15 bar		
	ND125	PN16	0,25 to 9 bar		
	ND150	PN16	0,25 to 8 bar		
CARBON STEEL	ND20 à ND50	PN40	0,25 to 40 bar	150 300	0,25 to 20 bar 0,25 to 50 bar
	ND65	PN16	0,25 to 16 bar		
	ND80 à ND100	PN40	0,25 to 40 bar	150	0,25 to 20 bar
		PN16	0,25 to 16 bar	300	0,25 to 25 bar
	ND125	PN16	0,25 to 16 bar		
		PN40	0,25 to 16 bar	150	0,25 to 10 bar
	ND150	PN16	0,25 to 10 bar	150	0,25 to 10 bar
		PN40	0,25 to 20 bar	300	0,25 to 10 bar
STAINLESS STEEL	ND20 à ND50	PN40	0,25 to 39 bar	150 300	0,25 to 18 bar 0,25 to 49 bar
	ND65	PN16	0,25 to 15 bar		
		PN40	0,25 to 39 bar		
	ND80	PN16	0,25 to 15 bar	150	0,25 to 18 bar
		PN40	0,25 to 39 bar	300	0,25 to 40 bar
	ND100	PN16	0,25 to 15 bar	150	0,25 to 18 bar
PN40	0,25 to 25 bar	300	0,25 to 25 bar		

<p>TYPE 110-130 TIGHT PLUG WITHOUT LEVER</p>	<p>TYPE 120-140 TIGHT PLUG WITH LEVER</p>	<p>TYPE 200 COUNTERWEIGHT</p>
---	--	--

Connection

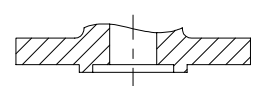
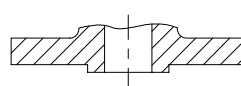
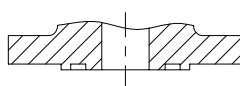
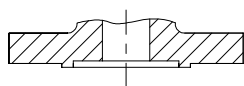
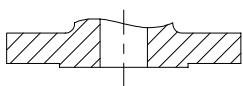
RAISED FACE CLASS 150/300
PN 16/40

MALE FEMALE FACING

TONGUE GROOVE FACING

MALE FEMALE FACING

TONGUE GROOVE FACING



Special design

**PTFE
INTERNAL
PARTS**



EDF NUCLEAR



**EPOXY
PAINTING**

**WITH
PROXIMITY
DETECTOR**

Order information

MODEL	PLUG	SEAT/NOZZLE	MATIERE	CONNECTION	OPTIONS	PN 16/40	DN CI 150/300
1	1 TIGHT WITHOUT LEVER	0 SEAT	A - STEEL	R - PN 40	DISC [JEP : O'RING EPDM JT : O'RING - FPM ON MODELS AR-IR - EPDM ON MODEL FR JK : O'RING KALREZ® T : PTFE	DN 20	04 (3/4")
	2 TIGHT WITH LEVER					DN 25	10 (1")
	1 TIGHT WITHOUT LEVER			DN 32		11 (1.1/4")	
	2 TIGHT WITH LEVER			DN 40		13 (1.1/2")	
	1 TIGHT WITHOUT LEVER	1 FULL NOZZLE	I- STAINLESS STEEL	1 - CLASS 150		DN 50	20 (2")
	2 TIGHT WITH LEVER			2 - PN 16		DN 65	23 (2.1/2")
1 TIGHT WITHOUT LEVER	1 FULL NOZZLE	I- STAINLESS STEEL	3 - CLASS 300	TIGHTNESS [ST : STELLITED SEAT PHC : HASTELLOY C2000® SEAT I : STAINLESS STEEL INTERNAL FT : THERMAL FLUID HT : HIGH TEMPERATURE CS : SPECIALS SPRING PLATE VB : BLOCKING SCREW	DN 80	30 (3")	
2 TIGHT WITH LEVER					DN 100	40 (4")	
						DN 125	50 (5")
						DN 150	60 (60")

ISO 4126

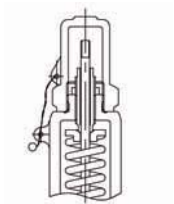


Type 500

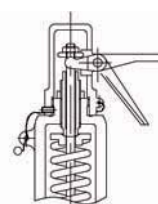


	ND	Set Pressure
BRASS	08 to 32	0,25 to 25 bar
CARBON STEEL	08 to 50	0,2 to 300 bar
STAINLESS STEEL	08 to 50	0,2 to 300 bar

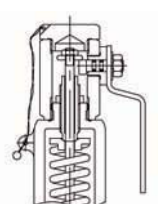
TIGHT PLUG WITHOUT LEVER



UNTIGHT PLUG WITH LEVER

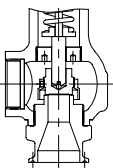


TIGHT PLUG WITH LEVER

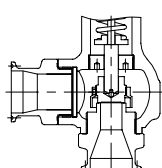


Connection

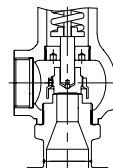
CLAMP CONNECTION



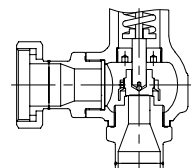
INLET AND OUTLET CLAMP CONNECTION



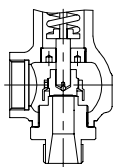
SMS CONNECTION



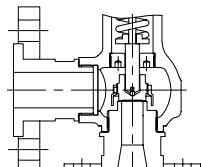
INLET AND OUTLET SMS CONNECTION



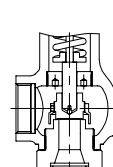
SCREWED / THREADED



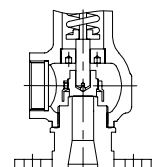
FLANGES / FLANGES



INLET AND OUTLET THREADED CONNECTION



FLANGES / THREADED



Special design

POLISHING

SPECIFIC LINED

**PTFE
INTERNAL
PARTS**

Order informations

MODEL	PLUG	CONNECTIONS	MATERIAL	ISO PN	OPTIONS	PN 10/25/40 100/250	DN CL 150/300 +NPT
5	1 TIGHT WITHOUT LEVER 5 UNTIGHT WITH LEVER 7 TIGHT WITH LEVER	0 SCREWED/THREADED BSP/NPT 1 FLANGE/FLANGE 2 FLANGE/THREADED BSP	A - CARBON STEEL	R - PN 40 1 - CLASS 150 3 - CLASS 300 RMP - PN 100	DISC [T : PTFE JT : O'RING PFM JKA : O'RING KALREZ JEP : O'RING EPDM JN : O'RING NITRILE	DN 08 (1/4")	01 (1/4")
	1 TIGHT WITHOUT LEVER	0 SCREWED/THREADED BSP/NPT	A - CARBON STEEL	RHP - PN 250		*DN 10 (3/8")	02 (3/8")
	1 TIGHT WITHOUT LEVER 5 UNTIGHT WITH LEVER 7 TIGHT WITH LEVER	0 SCREWED/THREADED BSP/NPT 1 FLANGE/FLANGE 2 FLANGE/THREADED BSP/NPT 3 SCREWED/FLANGE	I- STAINLESS STEEL	R - PN 40 1 - CLASS 150 3 - CLASS 300 RMP - PN 100	TIGHTNESS [PH : ALLOY C276 PH22 : HASTELLOY C22 TI : TITANE TA6V PE : SEAT PTFE + DISC PTFE/FFKM	*DN 15 (1/2")	03 (1/2")
	2 TIGHT WITHOUT LEVER 6 UNTIGHT WITH LEVER 8 TIGHT WITH LEVER	0 CLAMP/THREADED BSP/NPT 1 CLAMP/CLAMP 2 S.M.S./THREADED BSP/NPT 3 S.M.S./S.M.S.		R - PN 16		*DN 20 (3/4")	04 (3/4")
	1 TIGHT WITHOUT LEVER	0 SCREWED/THREADED BSP/NPT	I- STAINLESS STEEL	RHP - PN 250	BT : LOW TEMPERATURE (GASKETS KEL'F) HT : HIGH TEMPERATURE (GASKETS GRAPHITE) ST : NOZZLE AND DISC STELLITED	*DN 25 (1")	10 (1")
						DN 32 (1.1/4")	11 (1.1/4")
					DN 40 (1.1/2")	13 (1.1/2")	
					DN 50 (2")	20 (2")	

ISO 4126

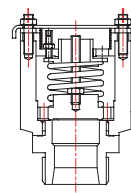


Type 600

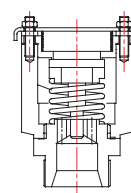


MATERIAL	TYPE	ND	PN
STAINLESS STEEL	600IRTBP	20 to 50	10
	600IR	20 to 50	
	602IR	25 to 100	
	606IRTBP	20 to 50	
	607IRTBP	25 to 50	
	610IRTBP	20 to 50	
	610IR	20 to 50	
	611IR	25 to 100	
	612IR	25 to 100	
	650IR	20 to 50	
	652IR	25 to 100	

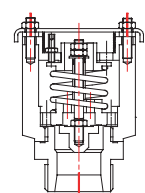
TYPE 600
PRESSURE



TYPE 610
VACUUM

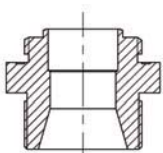


TYPE 650
PRESSURE/VACUUM

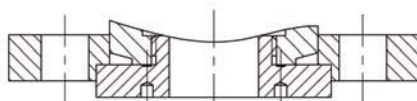


Connection

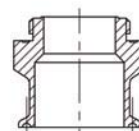
SCREWED CONNECTION



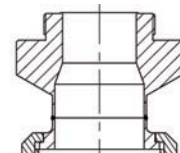
FLANGE CONNECTION



CLAMP CONNECTION



SMS CONNECTION

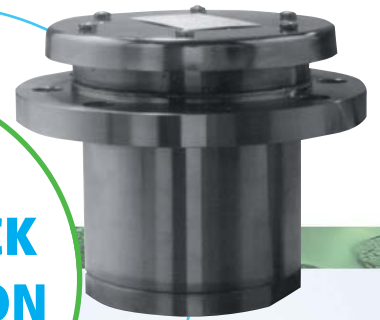


Special Design



**CHEMICAL
APPLICATION**

**TANK TRUCK
APPLICATION**



CLAMP

Order information

TYPE	PLUG	CONNECTION	MATIERE	PN CLASS	DN PN10 + BSP	CLASS 150 + NPT
6	0 - PRESSURE	0 - SCREWED BSP(NPT) / ATMOSPHERE 1 - FLANGE / FLANGE 2 - FLANGE / ATMOSPHERE 6 - SCREWED BSP(NPT) / SCREWED BSP(NPT) 7 - FLANGE / FLANGE 9 - CLAMP / ATMOSPHERE	I - STAINLESS STEEL H - HASTELLOY	R - PN10 1 - CLASS 150	DN 08	01 - 1/4"
	1 - VACUUM	0 - SCREWED BSP(NPT) / ATMOSPHERE 1 - FLANGE / FLANGE 2 - FLANGE / ATMOSPHERE 6 - SCREWED BSP(NPT) / SCREWED BSP(NPT)			DN 10	02 - 3/8"
	2 - VACUUM	0 - CLAMP / ATMOSPHERE 2 - SMS / ATMOSPHERE			DN 15	03 - 1/2"
	5 - PRESSURE & VACUUM	0 - SCREWED BSP(NPT) / ATMOSPHERE 1 - FLANGE / FLANGE 2 - FLANGE / ATMOSPHERE			DN 20	04 - 3/4"
	6 - PRESSURE & VACUUM	0 - CLAMP / ATMOSPHERE			DN 25	10 - 1"
				DN 32	11 - 1 1/4"	
				DN 40	13 - 1 1/2"	
				DN 50	20 - 2"	
				DN 65	23 - 2 1/2"	
				DN 80	30 - 3"	
				DN 100	40 - 4"	

ISO 4126



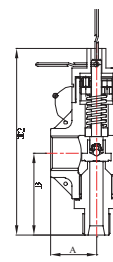
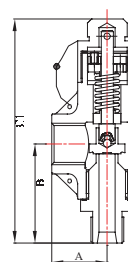
Type 700



ND	08	10	15
INLET	1,4"	3/8"	1/2"
OUTLET		1/2"	
A		28	
B		50	
C1		114	
C2		107	
SET PRESSURE MAXI		12 bar	
SET PRESSURE MINI		0,2 bar	

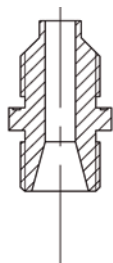
TIGHT PLUG

UNTIGHT PLUG + LIFTING RING

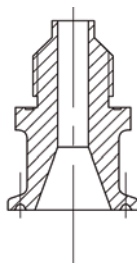


Connection

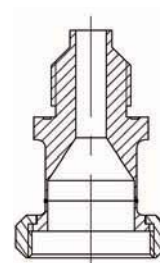
SCREWED CONNECTION



CLAMP CONNECTION



SMS CONNECTION



Special design

HIGH PRESSURE



Order information

TYPE	PLUG	CONNECTION	MATERIAL	PN/CLASS	DN PN10 + NPT
7	1 TIGHT	0 - SCREWED / THREADED BSP 7 - ATMOSPHERE	I- STAINLESS STEEL	R - PN16	DN 08 (1/4")
	2 TIGHT	0 - CLAMP / THREADED BSP 2 - SMS / THREADED		R - PN10	DN 10 (3/8")
	5 UNTIGHT + LEVER	0 - SCREWED / THREADED BSP		R - PN16	DN 15 (1/2")
	6			R - PN16	DN 20 (3/4")
	7 TIGHT+ + LEVER				

Soupapes API 520-526

Safety valves according to API 520-526

Sicherheitsventil nach API 520-526

+ PRODUITS

- Soupape conventionnelle - équilibrée - à levier.
- DN 25 (1") à DN 200 (8")
- 0,25 Bar à 100 bar
- Raccordements : Class 150 / 300 / 600... et PN 16 / 40 / 100 ...
- Matériaux :
 - Corps : Acier - Inox
 - Internes : Inox - Inconel® - Monel®
- Conforme DESP 97/23 CE + ATEX 94/9 - N.A.C.E. MR 0175

+ PRODUCTS

- Conventional - Balanced - With lever.
- 1" to 8"
- 0,25 bar to 100 bar
- Connexion : Class 150 / 300 / 600... and PN 16 / 40 / 100...
- Material :
 - Body : Carbon Steel - Stainless Steel
 - Internal parts : Stainless Steel - Inconel® - Monel®
- Conform to PED 97/23 CE + ATEX 94/9 - N.A.C.E. MR 0175

+ PRODUKTE

- Konventionell - ausgeglichen - mit Hebel
- DN 25 (1") bis DN 200 (8")
- 0,25 bar-ü bis 100 bar-ü
- Anschlüsse: Flansche Class 150 / 300 / 600...und PN 16 / 40 / 100...
- Werkstoffe :
 - Gehäuse Stahl und Edelstahl / Innenteile Edelstahl
 - Inconel® - Monel®
- Nach PED 97/23 EC + ATEX 94/9 - N.A.C.E. MR 0175



PETROLE/GAZ - CHIMIE/PETROCHIMIE - OIL AND GAS - CHEMICAL AND PETROCHEMICAL - ÖL & GAS - CHEMIE UND PETROCHEMIE



API 520-526

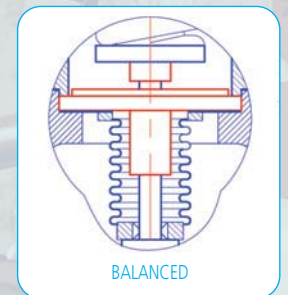
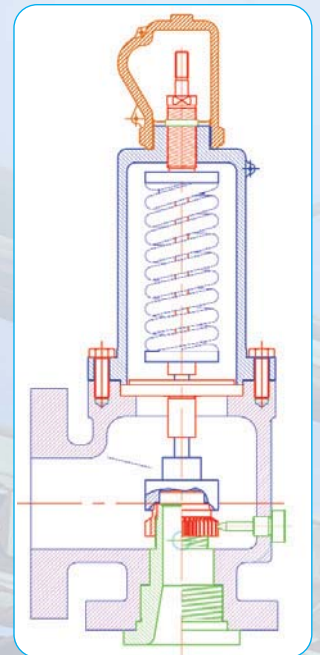


Type 300



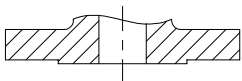
		FLANGE		MAXIMUM PRESSURE		FLANGE				MAXIMUM PRESSURE	
TYPE	ORIFICE	IN	OUT*	-29 à 38	<425°C	TYPE	ORIFICE	IN	OUT*	-29 à 38	<425°C
1D2	0,71 cm ²	150	150	20	6	3K4	11,86 cm ²	300	150	20	20
1D2	0,71 cm ²	300	150	20	20	3K4	11,86 cm ²	300	150	51	2
1D2	0,71 cm ²	300	150	51	29	3K4	11,86 cm ²	600	150	102	58
1D2	0,71 cm ²	600	150	102	58	3L4	18,41 cm ²	150	150	20	5,5
1E2	1,26 cm ²	150	150	20	6	3L4	18,41 cm ²	300	150	20	20
1E2	1,26 cm ²	300	150	20	20	4L6	18,41 cm ²	300	150	51	28
1E2	1,26 cm ²	300	150	51	29	4L6	18,41 cm ²	600	150	69	57
1E2	1,26 cm ²	600	150	102	58	4M6	23,2 cm ²	150	150	20	5,5
1 1/2 F 2	1,98 cm ²	150	150	20	6	4M6	23,2 cm ²	300	150	20	20
1 1/2 F 2	1,98 cm ²	300	150	20	20	4M6	23,2 cm ²	300	150	51	28
1 1/2 F 2	1,98 cm ²	300	150	51	29	4M6	23,2 cm ²	600	150	76	57
1 1/2 F 2	1,98 cm ²	600	150	102	58	4N6	28 cm ²	150	150	20	5,5
1 1/2 G 2	3,24 cm ²	150	150	20	6	4N6	28 cm ²	300	150	20	20
1 1/2 G 2	3,24 cm ²	300	150	20	20	4N6	28 cm ²	300	150	51	28
1 1/2 G 2	3,24 cm ²	300	150	51	29	4N6	28 cm ²	600	150	69	57
1 1/2 G 2	3,24 cm ²	600	150	102	48	4P6	41,2 cm ²	150	150	20	5,5
1 1/2 H 3	5,06 cm ²	150	150	20	6	4P6	41,2 cm ²	300	150	20	20
1 1/2 H 3	5,06 cm ²	300	150	20	20	4P6	41,2 cm ²	300	150	36	28
2 H 3	5,06 cm ²	300	150	51	29	4P6	41,2 cm ²	600	150	69	57
2 H 3	5,06 cm ²	600	150	102	58	6Q8	71,2 cm ²	150	150	11	5,5
2 J 3	8,3 cm ²	150	150	20	6	6Q8	71,2 cm ²	300	150	11	11
2 J 3	8,3 cm ²	300	150	20	20	6Q8	71,2 cm ²	300	150	21	21
3 J 4	8,3 cm ²	300	150	51	29	6Q8	71,2 cm ²	600	150	41	41
3 J 4	8,3 cm ²	600	150	102	58	6R8	103 cm ²	150	150	7	5,5
3 K 4	11,86 cm ²	150	150	20	6	6R8	103 cm ²	300	150	7	7

* GN 300 possible / Available in Standard PN

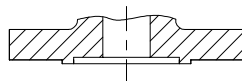


Connection

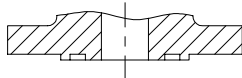
RAISED FACE
CLASS 150 - 300 - 600 - ...
PN 16 - 40 - 100 - ...



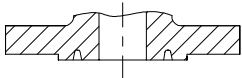
MALE FEMALE
FACING



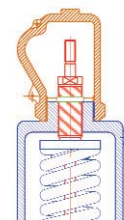
TONGUE GROOVE
FACING



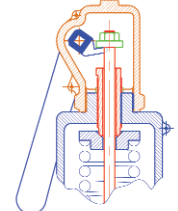
RTJ



TIGHT PLUG WITHOUT LEVER

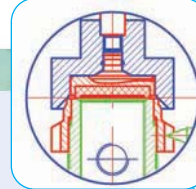


TIGHT PLUG WITH LEVER

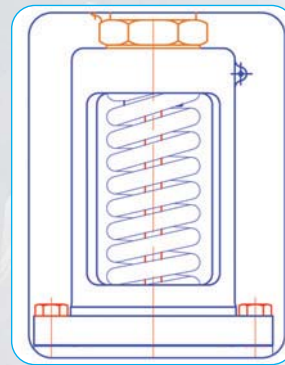


Special design

**EPOXY
PAINTING**



**DISC WITH
O'RING OR
STELLITE**



**OPEN
CHUNK**



Order informations

MODEL	PLUG	NOZZLE	MATERIAL	CLASS / PN	OPTIONS	INLET	ORIFICE	OUTLET
3 TYPE API	1 TIGHT WITHOUT LEVER	1 STANDARD	A - STEEL	1 : 150 X 150	ST : STELLITED	1 = 1"	D - E	2 = 2"
				2 : PN16 X PN16		7 = 1.1/2"	F	2 = 2"
				3 : 300 X 150			G - H	3 = 3"
	2 TIGHT WITH LEVER			4 : PN40 X PN16	VB : BLOCKING SCREW	2 = 2"	H - J	3 = 3"
				5 : 300LT X 150		3 = 3"	J - K - L	4 = 4"
	3 OPEN SHANK WITH LEVER	2 BELOW		I- STAINLESS STEEL		4 = 4"	L - M N - P	6 = 6"
				6 : 600 X 150	6 = 6"	Q - R	8 = 8"	
				7 : 600 X 300				

Systeme de prise d'échantillon en ligne

Inline Sampling System

Probeentnahmesystem

+ PRODUITS

- Appareil monté directement sur ligne process (échantillon représentatif du produit)
- Pas de contact direct de l'opérateur avec le produit
- Faible couple de manœuvre
- Robinet toujours fermé par rapport à la ligne process (étanchéité totale)
- DN20 à DN150
- Matériaux : Inox 316 - Inox 304 - Hastelloy® - Nickel

+ PRODUCTS

- Valves set directly on the process line (representative sampling of the product)
- No direct contact with the operator when taking a sample
- Low torque
- Valves always closed on the process line (completely tight)
- ND20 à ND150
- Material : 316 or 304 Stainless Steel - Hastelloy® - Nickel

+ PRODUKTE

- Ventil direkt auf Prozesslinie montiert (representative Probe des Produkts)
- Kein direkter Kontakt bei der robenahme
- Niedriges Drehmoment
- Ventile in der Anlage immer geschlossen (absolut dicht)
- DN20 bis DN 150
- Werkstoffe: Edelstahl 316 oder 304 - Hastelloy® - Nickel



3 ÉXECUTIONS

- Standard (PTFE)
- Chimie process (PTFE + Graphite)
- Haute température (PTFE + PEEK)

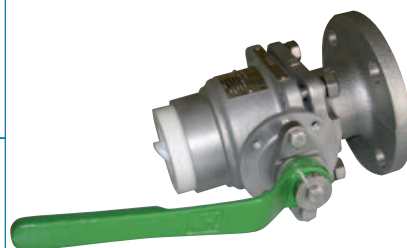
3 EXECUTIONS

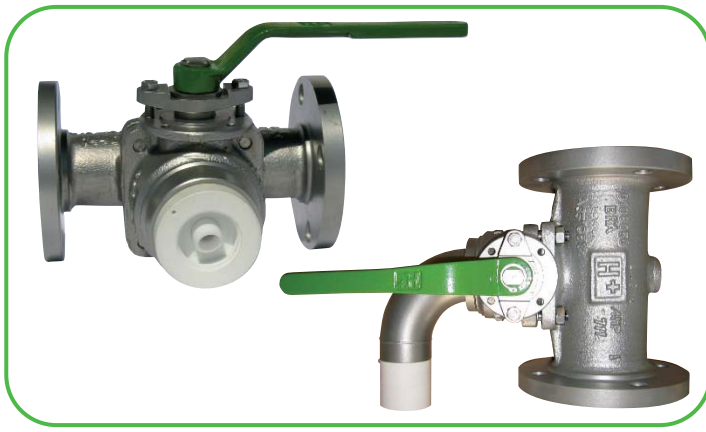
- Standard (PTFE)
- Chemical process (PTFE + Graphite)
- High temperature (PTFE + PEEK)

3 AUSFÜHRUNGEN

- Standard (PTFE)
- Chemie prozess (PTFE + Graphite)
- Hoch temperatur (PTFE + PEEK)

CHIMIE/PETROCHIMIE - PHARMACIE - CHEMICAL AND PETROCHEMICAL - PHARMACEUTICAL - CHEMIE UND PETROCHEMIE - PHARMAZIE



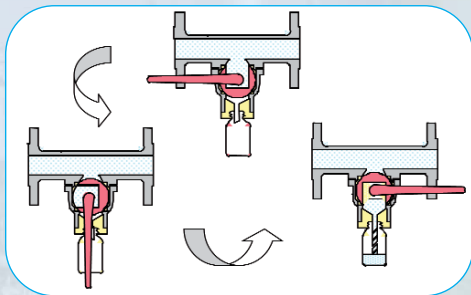


Sampling system

In line

MATERIALS

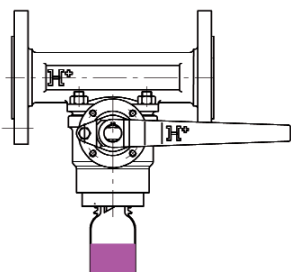
- Body : stain steel/nickel/Hastelloy®
- Ball : Stain Steel
- Shaft : Stain Steel
- Seat, inserts, Gland packing and gaskets, P.T.F.E. (Other materials on request)
- o'ring VITON® or CHEMRAZ® ou KALREZ®



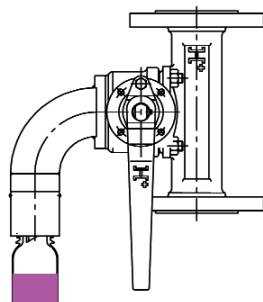
ND	FLANGES	STANDARD MINI / MAXI	CHEMICAL MINI / MAXI	HIGH TEMPERATURE MINI / MAXI
20	3/4"	PN16	16 bar at 20°C / 11 bar at 180°C	16 bar at 20°C / 11,7 bar at 250°C
25	1"	GN40	16 bar at 20°C / 11 bar at 180°C	16 bar at 20°C / 11,7 bar at 250°C
32	1" 1/4	PN40	16 bar at 20°C / 11 bar at 180°C	16 bar at 20°C / 11,7 bar at 250°C
40	1" 1/2			30 bar at 20°C / 25 bar at 250°C
50	2"	CLASS 150	16 bar at 20°C / 11 bar at 180°C	16 bar à 20°C / 11,7 bar à 250°C
80	3"	CLASS 300	16 bar at 20°C / 11 bar att 180°C	30 bar à 20°C / 25 bar at 250°C
100	4"	GN300	16 bar at 20°C / 11,7 bar at 250°C	16 bar à 20°C / 11,7 bar at 250°C
150	6"			

Mounting

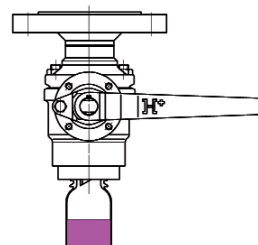
HORIZONTAL



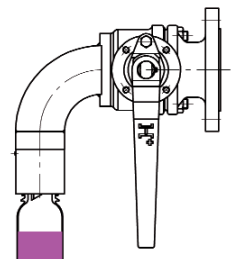
VERTICAL



TANK BOTTOM

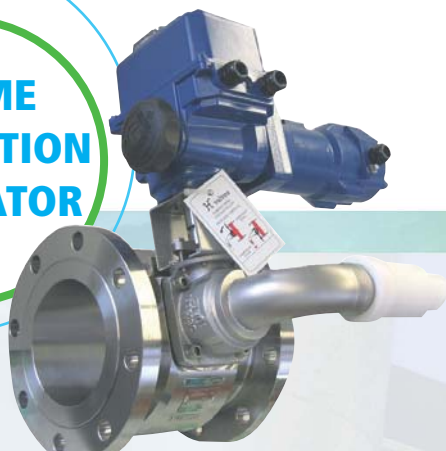


TANK WALL



Special design

**BITUME
APPLICATION
+ ACTUATOR**



**SAMPLE
INJECTION**



**TIGHT
BOTTLE**



**WITH
PROXIMITY
SWITCHES**

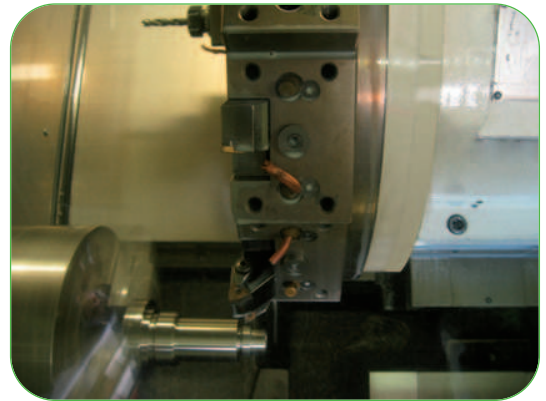


Order information

TYPE	CAPACITY	MOUNTING	MATERIAL	VARIANCE	CONNECTION	DN FLANGE			
2	026 : 25 ML	H : HORIZONTAL	H - ALLOY C276	E : EPDM	P - PN16/10 > DN150	04 = 20 = 3/4"			
	051 : 50 ML	V : VERTICAL		K : GASKET KALREZ®	O - PN10 > DN150	10 = 25 = 1"			
		F : TANK BOTTOM	I - STAINLESS STEEL	Z : SPECIAL	A - ASA 150	11 = 32 = 1" 1/4			
			C : WALL	H : HIGH TEMPERATURE	W - BW	B - ASA 300	13 = 40 = 1" 1/2		
101 : 100 ML				Y - SW	20 = 50 = 2"	23 = 65 = 2" 1/2	30 = 80 = 3"	40 = 100 = 4"	60 = 150 = 6"

Nos + / Our + / Unsere +

Nos moyens de production / Our means of production / Unsere Produktionsanlagen



Nos moyens d'essais / Our means of test / Unsere Prüfeinrichtungen



Nos services / Our services / Unsere Dienste

- Stage de formation soupapes de 2 jours en centre agréé organisé plusieurs fois par an
- 2 days training in an approved center several time per year
- 2-tägige Ausbildung 'Sicherheitsventil' in einem zertifizierten Zentrum. Mehrmals pro Jahr
- Entretien et réparation des soupapes de la gamme H+Valves
- Maintenance and repair of H+Valves brand safety valves
- Instandhaltung und Reparatur von H+ VALVES Ventilen

Sécurité - Technologie

Security - Technology

Sicherheit - Technologie

H+VALVES, filiale de TECHNE, fabrique une large gamme de soupapes de sécurité et de systèmes de prise d'échantillon qui satisfont aux exigences croissantes des industries de process, pour un environnement sain et sécurisé.

La gamme de soupapes de sûreté proposée va de 1/4" à 8" selon la norme ISO 4126. Avec les soupapes H+Flow® API 526, H+Valves répond aux fortes attentes de sa clientèle. L'entreprise propose également un concept innovant pour des opérations en toute sécurité : le système d'échantillonnage, prises en ligne ou dans réacteur.

Certifiée ISO9001-2000 et respectant strictement la norme DESP97/23 CE, H+Valves conserve une réactivité qui lui a permis de gagner la confiance de nombreux clients prestigieux et ce, à travers le monde entier : Sanofi Aventis, Total Petrochemicals, Pfizer Global Manufacturing, etc ...

H+Valves investit par ailleurs toujours davantage dans la R&D pour être en mesure de fournir des solutions sécurisées applicables à vos différentes situations.

H+VALVES, a subsidiary of TECHNE, is a manufacturer of a wide range of safety valves and sampling system that meet the strict demands of process industries. Our purpose is to assure a healthy and secure environment.

The range of safety valves is proposed from 1/4" to 8" according to standard DIN. With API valves H+Flow® - stainless steel or carbon steel - H+Valves meets the high expectations of its customers. The company also offers an innovative concept for safe operation when taking sample : sampling system, taken online or in the reactor.

Certified by ISO9001-2000 and conform strictly to the standard PED 97/23 EC, H+Valves retains best reactivity that has earned the trust of many famous clients all over the world : Sanofi Aventis, Total Petrochemical, Pfizer Global Manufacturing, etc...

H+Valves continue to make important investments in R&D in order to be able to provide secure solutions for different situations.

H+VALVES, Tochtergesellschaft von TECHNE, produziert eine breite Produktpalette, die den wachsenden Forderungen der Prozeßindustrien genügen, für eine gesunde und sichere Umwelt.

Unser Programm geht von 1/4" bis 8" nach der DIN-Norm. Mit den API Ventilen H+FLOW - Stahl und Edelstahl - H+ VALVES entspricht den hohen Erwartungen seiner Kundschaft. Unser Unternehmen bietet ebenfalls ein innovatives Konzept für Arbeiten ohne Risiko: Das Probeentnahmesystem, online oder im Reaktor.

Die Zertifizierung nach ISO 9001-2000 und die strenge Beachtung von PED 97/23 EC, ermöglichte H+ VALVES das Vertrauen zahlreicher anspruchsvoller Kunden in der Welt zu gewinnen : Sanofi Aventis, Total, Pfizer GM...

H+ VALVES investiert immer mehr in R& D, um sichergestellte Lösungen zu liefern, die auf verschiedene Situationen anwendbar sind.



SUMINISTROS Y SERVICIOS INDUSTRIALES
SERVITEC SA



Dirección: Avinguda de Sant Julià, 155, 08403
Granollers, Barcelona

Teléfono: 938 60 00 80

Email: info@servitecgrup.com

Web : www.hvalves.com

